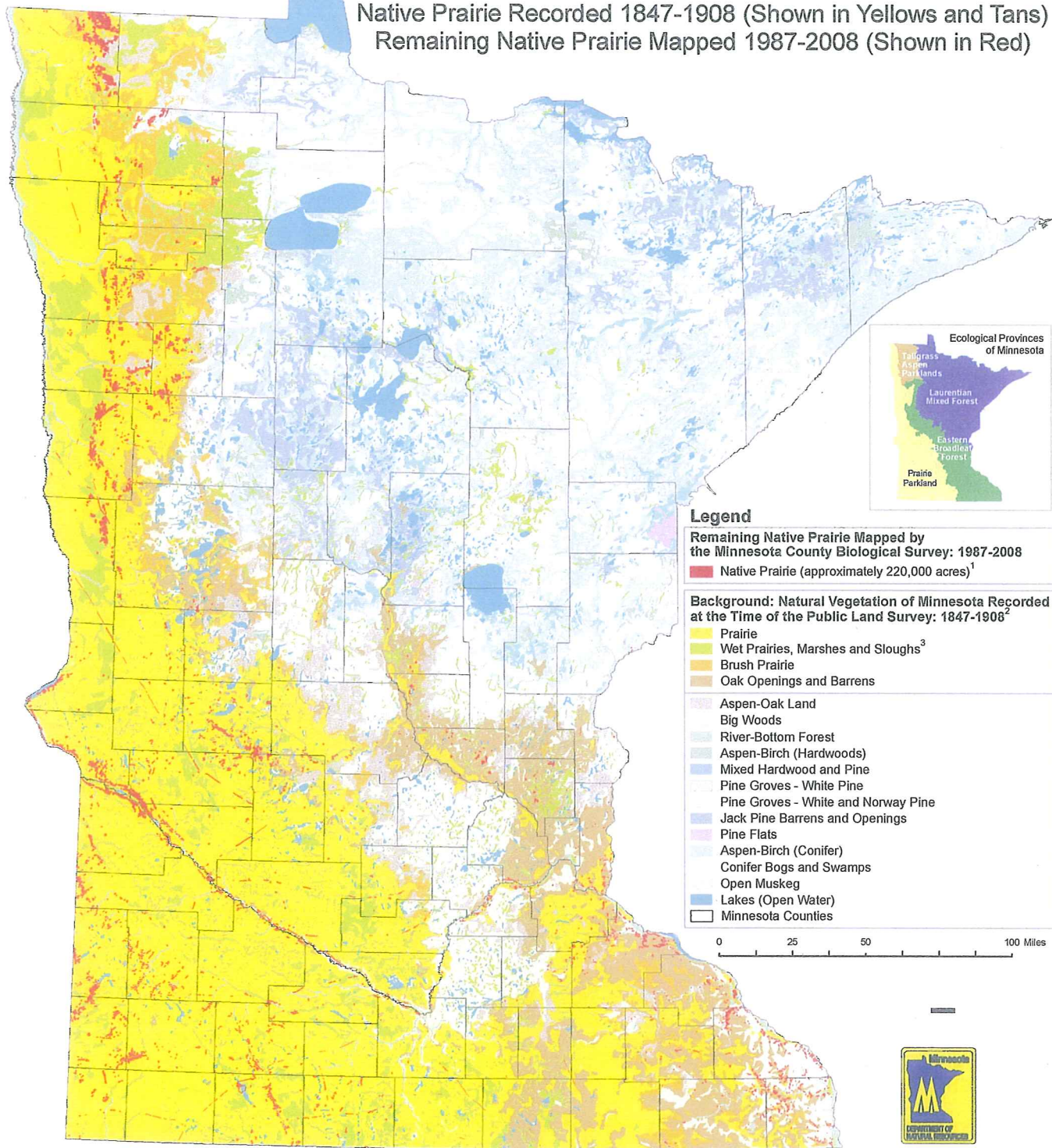


Minnesota's Remaining Native Prairie 100 Years After the Public Land Survey

Native Prairie Recorded 1847-1908 (Shown in Yellows and Tans)
Remaining Native Prairie Mapped 1987-2008 (Shown in Red)



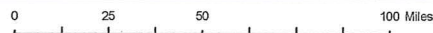
Legend

Remaining Native Prairie Mapped by the Minnesota County Biological Survey: 1987-2008

- Native Prairie (approximately 220,000 acres)¹

Background: Natural Vegetation of Minnesota Recorded at the Time of the Public Land Survey: 1847-1908²

- Prairie
- Wet Prairies, Marshes and Sloughs³
- Brush Prairie
- Oak Openings and Barrens
- Aspen-Oak Land
- Big Woods
- River-Bottom Forest
- Aspen-Birch (Hardwoods)
- Mixed Hardwood and Pine
- Pine Groves - White Pine
- Pine Groves - White and Norway Pine
- Jack Pine Barrens and Openings
- Pine Flats
- Aspen-Birch (Conifer)
- Conifer Bogs and Swamps
- Open Muskeg
- Lakes (Open Water)
- Minnesota Counties



November, 2009

Prairies mapped by the Minnesota County Biological Survey (MCBS) as of November, 2009. Some of the prairies represented on this map may have been destroyed since the time of their documentation by MCBS. Mapping of native prairies by MCBS is in progress in the following counties and will be completed by 2010: Dodge, Faribault, Freeborn, Mower, Nobles, Roseau, Steele, Waseca, and Watonwan.

¹Adapted from Marschner, F.J. 1974. *The original vegetation of Minnesota, compiled from U.S. General Land Office Survey notes* [map]. 1:500,000. Redrafted from the 1930 original by P.J. Burwell and S.J. Haas under the direction of M.L. Heinselman. St. Paul: North Central Forest Experiment Station, United States Department of Agriculture.

²In the Laurentian Mixed Forest Province, this category mainly comprises marshes and sloughs. If wet prairies were present in the province, they were uncommon and likely restricted to western and southern regions bordering the Tallgrass Aspen Parklands and Eastern Broadleaf Forest provinces.

³GIS data for many of the native prairies depicted on this map are available in shapefile format as "MCBS Native Plant Communities" and "MCBS Railroad Rights-of-Way Prairies" on the DNR's data deli at <http://deli.dnr.state.mn.us/index.html>. Information on MCBS procedures for mapping Minnesota's prairies and other native plant communities is available at <http://www.dnr.state.mn.us/eco/mcbs/index.html>.

Map is also available online at: http://files.dnr.state.mn.us/eco/mcbs/prairie_map.pdf